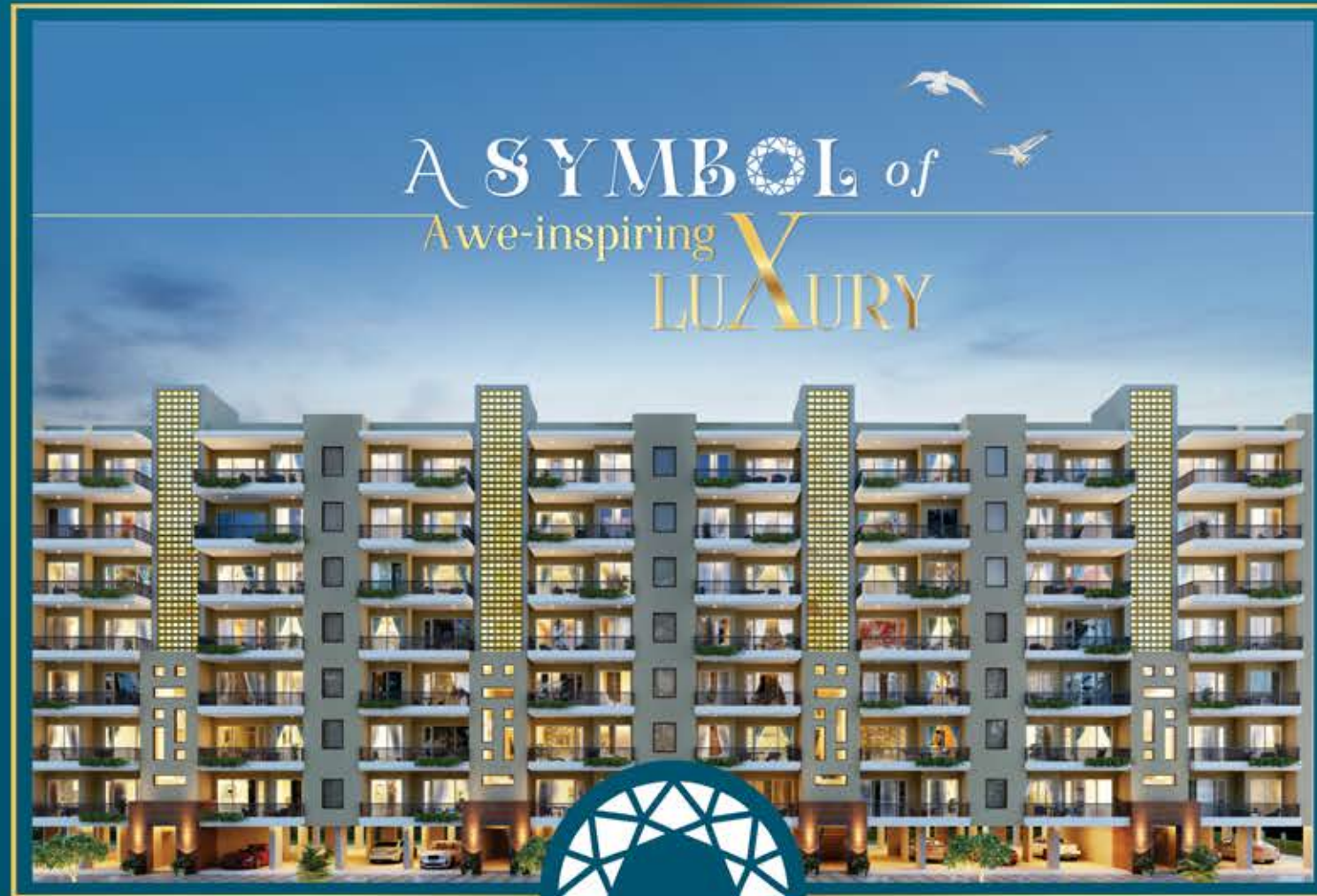


3 | 4 BHK & PENTHOUSES



BELISTON
AVENUE

Bountiful Luxury for the chosen few.



An *Invitation* to
EXTRAVAGANT LIVING

Life is a sequential dream with never-ending desires and fantasies. How about a residential cocoon that wraps all the desirable elements which define a magnificent lifestyle in itself? Enter a world studded with luxury and elegance in every space designed for a deserving lifestyle.



An Opportunity of a
LUXURIOUS LIFESTYLE

BELISTON

Welcome to Beliston Avenue!

3 | 4 BHK
& PENTHOUSES

It's our pleasure to invite you permanently to step into your residences built on the foundation of style, status, and eternal bliss. Here's a world that's waiting to enthral you with the luxuries of an elite location, topped with the exotic ambiance of greens.





A Truly Staggering Entrance Gate

Built expansively on private serene lands in a gated community of 5 Acres, impeccably designed Beliston Avenue is home to mid-rise Stilt+4 storeyed 3, 4 BHK Apartments & Penthouses.



An Enrapturing Façade with 2 Sides Open

This awe-inspiring edifice stands testimony to a seamless blend of advanced engineering solutions and dramatic visual statements. Due to their ingenious design layout, these 2 side open, artfully conceptualised abodes get an abundance of sunshine and fresh air around the year.





A Lavish Lifestyle that's within reach

It has been ages since you have been looking for a home that befits every aspect of your choices. Be it location, space, budget, quality construction, sophisticated lifestyle, luxury, comfort, urban neighborhood, serene surroundings and much more, we have packed them all in Beliston Avenue.



An Enlivening & Enriching Clubhouse



- A Posh Double-Height Lobby
- Avant-garde Swimming Pool
- Awe-inspiring Gymnasium
- Exclusive Aerobics Room
- Grand Banquet-Hall & Kitchen.
- Tranquil Meditation Room.
- A Lively Kids Activity Room
- Well-stocked First-aid Room
- Sparkling Entertainment Room
- Cozy Card Room for Adults
- A Vast Library
- Expansively Breezy Terrace
- All Indoor Games like Billiards, Chess, Soccer Table, Table Tennis etc.





A Scenic Landscape for a Wholesome Life

Wake up to nature's tranquil rhythm and enjoy its serene melodies. Enjoy lovely picnics with your little ones, soaking up the soothing rays of the sun and at twilight get charmed by the captivating sunsets that are an absolute treat to watch from the balcony. At Beliston Avenue your only neighbours are greenery, sun, and true luxury.



SPECIFICATIONS



ULTRA MODULAR KITCHEN

- Walls - Digital Ceramic Tiles up to 2 ft
- Flooring - Vitrified Anti-skid & Best quality Ceramic tiles
- External Window - UPVC Framed & Shutter / Powder Coated Aluminum
- Switches - Modular (High Quality)
- LPG - Gas pipeline supply
- Others - Granite Counter Top with Double Headship
Providing Double Stainless Steel Sink



MISCELLANEOUS SPECIFICATIONS

- Structure & Design - Earthquake Resistant RCC Frame Structure
- Lifts - High-speed Lifts by Schindler/Kone/ Otis or Equivalent Brand
- Wifi Connectivity - High-speed Wi-fi in the Premises*
- Spacious Parking - Covered Car parking
- Internal Wall Finish - Gypsum plaster/ plastic paint on walls & ceiling,
POP Cornices in Drawing/Dining /Bedrooms
- Water Supply - Tubewell with Hydro Pneumatic system
- Water Storage for Rainwater Harvesting
- Overhead Tanks to Ensure regular Running Water



DOORS/WINDOWS

- Internal Walls - Wooden Doors made with Well-seasoned Hardwood Timber
- External Walls - Windows/ glazing in UPVC / Powder Coated Aluminium
- Power Supply & Backup - 24x7 Power backup up to 3KWH*
- Concealed electrical wiring with fire-resistant copper wires
- Adequate plug points
- Safety & Security - Safety & Security (So you sleep Peacefully)
- 24x7 CCTV with recording & control room
- Latest fire-fighting equipment
- Intercom facility



BREATHING SPACE IN BALCONIES

- Flooring - Anti-skid Tiles
- Switches - Modular
- Others - Designer MS Railings (up to 3.5"-4")



TRENDY PAINTS

- Internal Walls - Acrylic Emulsion Washable paint of Asian
/British / Nerolac or Equivalent.
- External Walls - Anti-fungal Weather Shield Paint



SAFE & STYLISH STAIRCASES

- Walls - Acrylic Emulsion Washable paint of Asian /British
/ Nerolac or Equivalent.
- Flooring - Granite/ Premium Kota Stone / Marble
- External Window - UPVC Frames & Shutters



LAVISH FLOOR DESIGNING

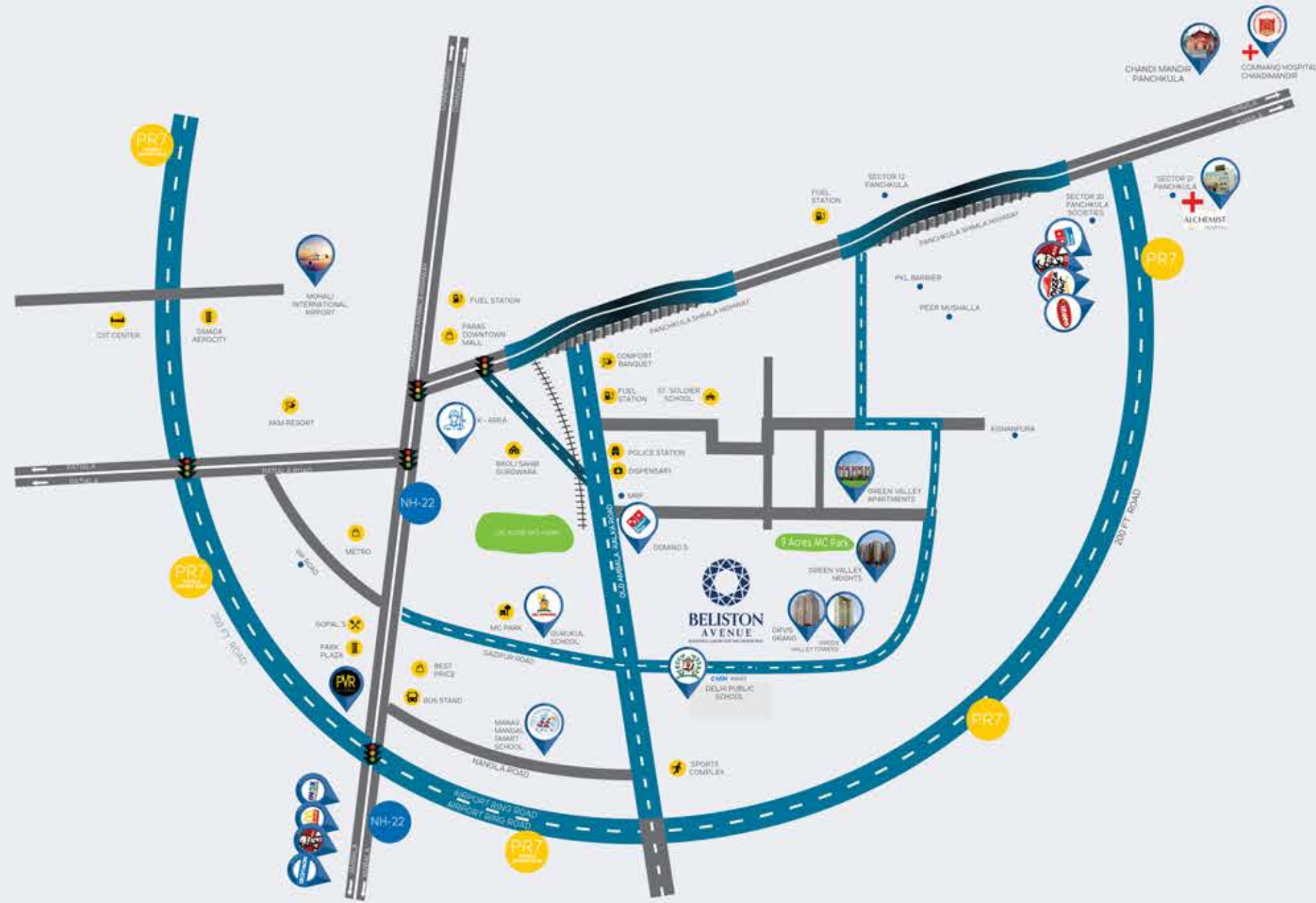
- Flooring - Double Charged Superior quality Vitrified tiles
- Balconies & Utility Area - Ceramic Tiles
- Others - Anti-skid Ceramic Tile Floor



GLAMOROUS WASHROOMS

- Walls - Acrylic Emulsion Washable Paint & Ceramic Tiles up to 10 ft\
- Flooring - Anti-skid Tiles
- External Window - UPVC Frames & Shutters
- Switches - Modular
- Doors - Wooden Doors made with Well-seasoned Hardwood Timber
- Others - Provision of Geyser Points & Exhaust fans

Location Map



MAP NOT TO SCALE

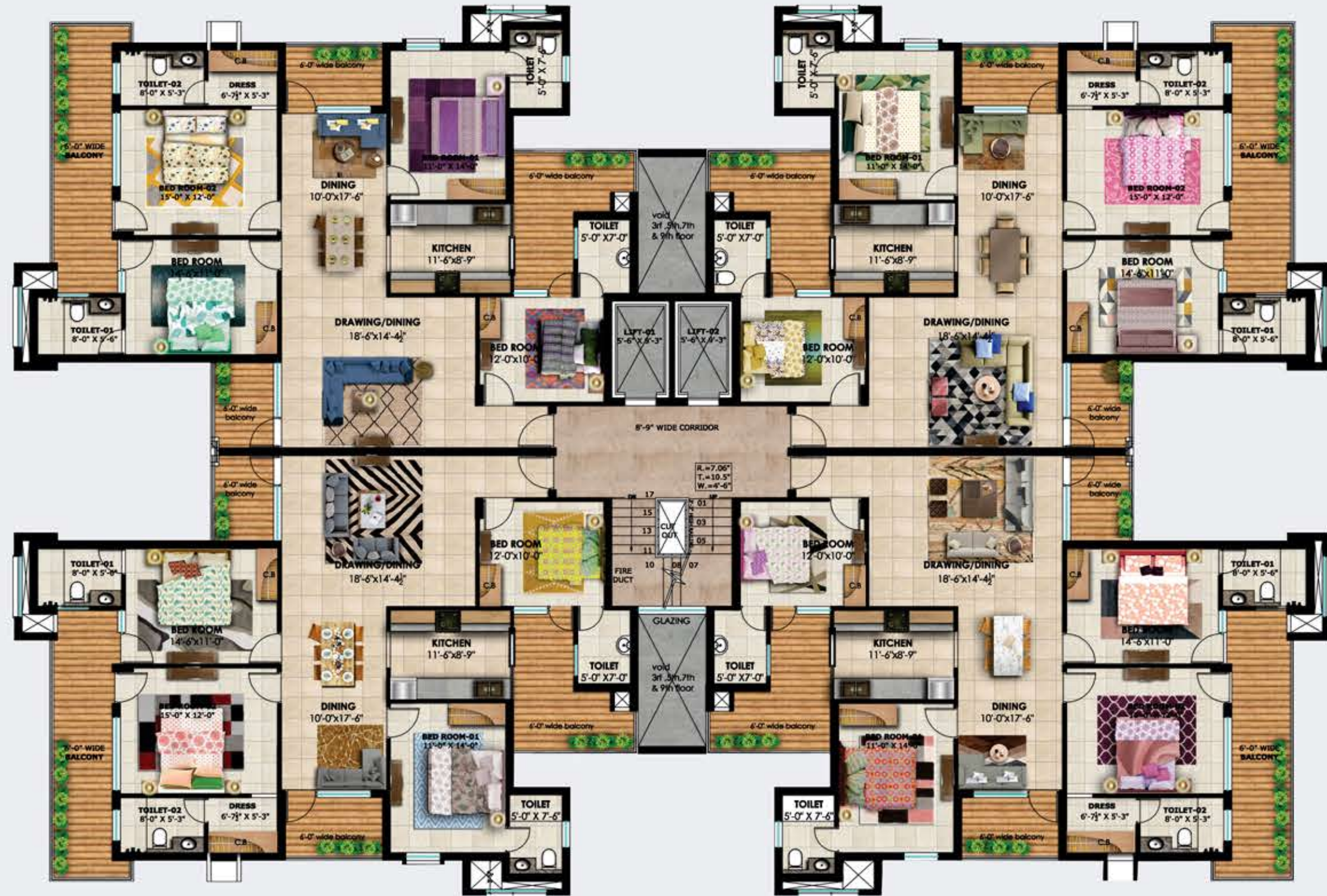


Site Plan

1. Driveway/ Drop Off
2. Element Wall
3. Yoga & Meditation Area
4. Gazebo Sitting
5. Herbal Garden
6. Green Grand Lawn
7. Step Landscape
8. Senior Citizens Area
9. Deck/ Sculpture Area
10. Kids Play Area with Play-Box
11. Trellis with Greenery
12. Family Pool
13. Kids Pool
14. Center Gazebo Sitting
15. Club
16. Exotic Trees Area
17. Pergola Walkways
18. Step Sitings
19. Elder Sitting Area


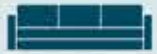



- S 6 | PENTHOUSE
- S 7
- S 10





4 BHK Floor Plan

Super Built-up Area: 2281 Sq. ft. Approx.

	Bedroom 01	11'-0" X 14'-0"
	Bedroom 02	15'-0" X 12'-0"
	Bedroom 03	14'-6" X 11'-0"
	Bedroom 04	12'-0" X 10'-0"
	Drawing Area	18'-6" X 14'-4 1/2"
	Dining Area	10'-0" X 17'-6"
	Kitchen	11'-6" X 8'-9"
	Balcony	6'-0"



BELISTON AVENUE
 Beautiful Luxury for the chosen few.

Lower Floor Plan

Super Built up Area: 3135 Sq ft Approx.



Bedroom 01	11'-0" X 14'-6"
Bedroom 02	12'-0" X 14'-6"



Drawing Area	17'-1.5" X 21'-0"
--------------	-------------------



Kitchen	12'-0" X 12'-0"
---------	-----------------



Balcony	6'-0"
---------	-------



BELISTON AVENUE
 Beautiful Luxury for the chosen few.

Upper Floor Plan

Super Built-up Area: 3135 Sq. ft. Approx.



Bedroom 01	11'-0" X 14'-6"
Bedroom 02	12'-0" X 14'-6"



Lobby	10'-1.5" X 6'-0"
-------	------------------



Balcony	6'-0"
---------	-------

Another
MASTERPIECE
from the House of GVT

We are happy to offer you residential happiness backed with quality, trust and years of unwavering commitment. Every square inch of our construction is a testament to years of professional experience and expertise. We follow strong work ethics, giving attention to every minute detail in the real-estate development zone. We build our projects keeping in mind all your necessities topped with your preferences. Our projects are accentuated with wow factors to add that perfect touch of luxury and comfort packed together.





BELISTON AVENUE

Bountiful Luxury for the chosen few.

CORPORATE OFFICE:

Old Kalka Road, Opp. Delhi Public World School,
Gazipur, MC Zirakpur, Distt. Mohali 160104.

Email: sales@thebelistonavenue.com | www.thebelistonavenue.com

Tel:



Disclaimer : -Information, images or sketches shown in this billboard/representation are indicative only and are architect's impression of the envisaged developments and the same are subject to change as may be necessary at the time of construction over the plots allotted to buyers.