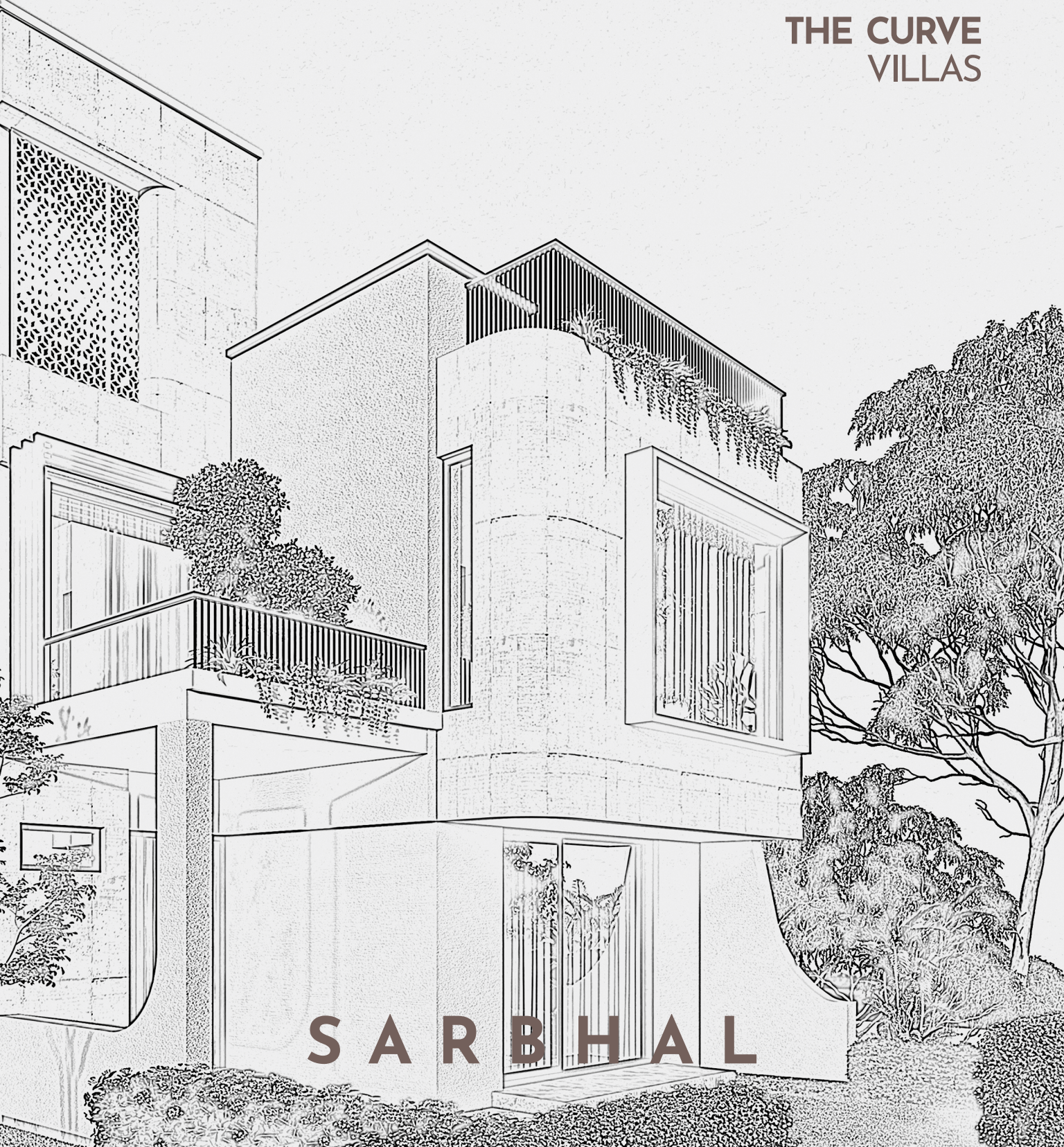


PROJECT BY SOLITAIRE GREENS



# THE CURVE VILLAS



SARBHAL



SAD3HAL

# THE CURVE

## INHERITS THE CAPABILITY TO SWITCH PATHS.

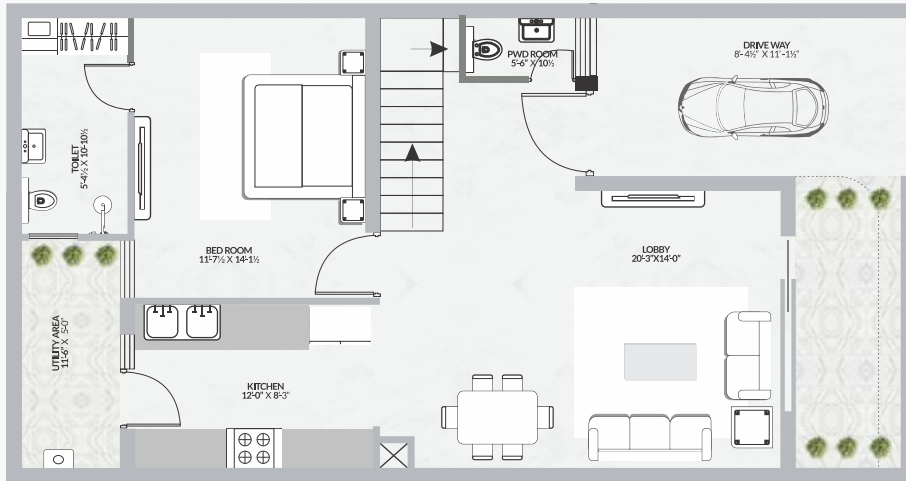
By implementing the same ideology, We at **SARBHAL** are keen on redefining built up real estate with our modern minimalist design approach. An endeavour to not only create magnificent, contemporary villas in Aerocity, but more importantly, to provide calm retreats by bringing our designing expertise to the construction industry. We believe in minimal inventory with maximum focus on quality.

These east facing villas have been purposefully designed for people seeking serenity & cohesiveness in and around their living space. They have been strategically located in a secured gated community with near vicinity to the airport, and adjoining to Amar Nursing College.

Keeping in mind the existing circumstances, a pre-determined plan for a work-from-home setup has also been developed. We are prioritizing minimal wastage, keeping our societal responsibilities in sight. It's time for you to make the move from traditional themes to modern minimalist aesthetics.



# GROUND FLOOR LAYOUT

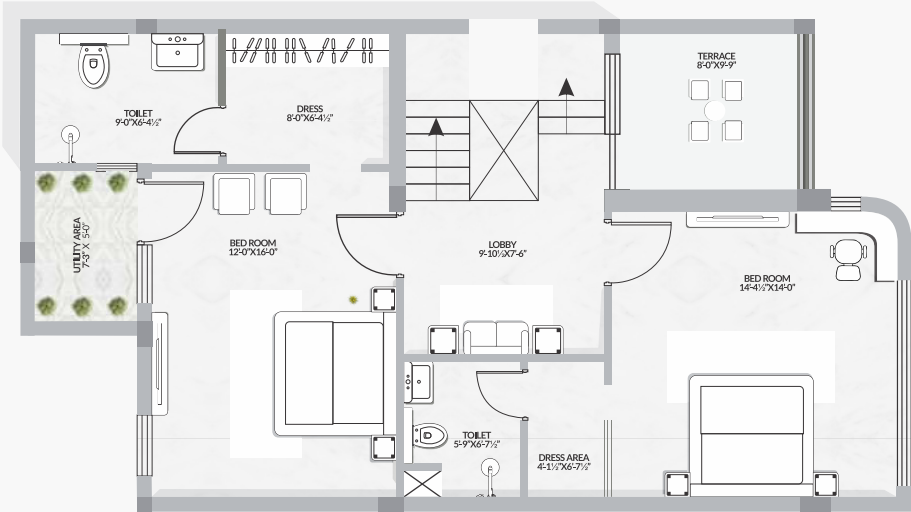


**DUPLEX VILLA**  
DIMENSIONS : 23'6" X 43'6" FT.



This is only a conceptual presentation of the project & not a legal offering. All specifications mentioned and images show are indicative and are not part of the offering and may vary from the actual development. All images show are subject to change as decided by the developer or by and competent authority in the best interests of the development

# FIRST FLOOR LAYOUT



DUPLEX VILLA  
DIMENSIONS : 23'6" X 43'6" FT.



This is only a conceptual presentation of the project & not a legal offering. All specifications mentioned and images show are indicative and are not part of the offering and may vary from the actual development. All images show are subject to change as decided by the developer or by and competent authority in the best interests of the development

# LOCATION



# TECHNICAL SPECIFICATION

## LIVING, DINING, FORYER , FAMILY LOUNGE

Door	Laminated Flush Doors / Skin Doors
Flooring	Vitrified Tiles
Walls	Acrylic Emulsion Paint Finish
External Windows	UPVC/ Powder Coated Aluminum

## MASTER BEDROOM/ DRESS ROOM

Door	Laminated Flush Doors
Flooring	Vitrified Tiles
Walls	Acrylic Emulsion Paint Finish
Wardrobes	Modular Wardrobes of Standard Make in all the bedrooms

## WASHROOM

Door	Laminated Flush Doors/Skin Door
Flooring	Anti Skid Tiles of Premium Quality
Walls	Glazed Tiles & Acrylic Emulsion
Fitting	Branded Chinaware & CP fittings

## KITCHEN

Flooring	Premium Quality Tiles
Walls	Premium Quality Tiles 2ft. above counters & Acrylic Emulsion Paint
Fixtures	Premium Quality CP Fittings, Double Bowl Sink

## ELECTRICAL WORKS

Provision for Split Acs  
 Concealed Electrical Wiring with Fire Resistant Wires  
 Adequate Plug Points

## BALCONIES/ TERRACE

Flooring	Anti Skid
Others	MS Railing

## STRUCTURE

Earthquake Resistant RCC Beam Column & 9inch Brick Structure



## SARBHAL VENTURES

**AERO GREENS** (A RERA APPROVED PROJECT), ADJ. AMAR NURSING COLLEGE,  
DIST. SAS NAGAR MOHALI, (PB.) INDIA | E: [INFO@SARBHAL.IN](mailto:INFO@SARBHAL.IN) | M: +91 82888 07012

---

Disclaimer: The Brochure is purely conceptual and not a legal offering. Further the promoters reserve the right to add/ delete the details/ features/ specifications/ elevation mentioned here as per the circumstances. Map is not to scale. Images are used for illustration purpose only