

Consultant & Architect Planners
DHAM CONSULTANTS
 Chandigarh

We believe that great architecture improves the quality of life and well built spaces help conserve the earth's resources. The project developers are well known consultants in the field of planning, design, landscape, MEP & delivery solutions for the built environment.

KLV

Builders & Developers

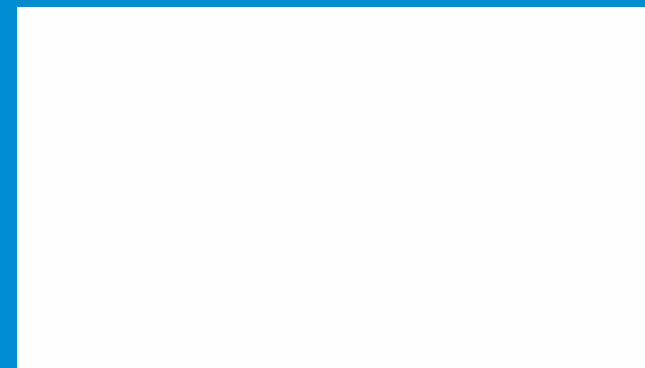
Head Office

SCO 358-59, 3RD FLOOR, SECTOR 34A, CHANDIGARH
 email: klvsignaturetowers@gmail.com

Site Office

Signature Towers, JLPL City, Sector 66A, Mohali
www.klvbuilders.com | www.dhamconsultants.com

LUXURY IS BY APPOINTMENT ONLY



Disclaimer: All pictures, plans, layouts, information, data and details included in this brochure are indicative only and may change at any time up to the final "as built" status in accordance with final designs of the project and regulatory approvals and planning permissions. *Note: All natural products such as tiles, wood etc. may have variations in texture, color & behavior.

KLV
 Builders & Developers

JLPL
 Working Towards A Golden Tomorrow

Signature Towers
 Come home to a signature lifestyle...
 JLPL City, Sector 66A, Mohali
 A KLV Builders & Developers & JLPL (Joint) Initiative

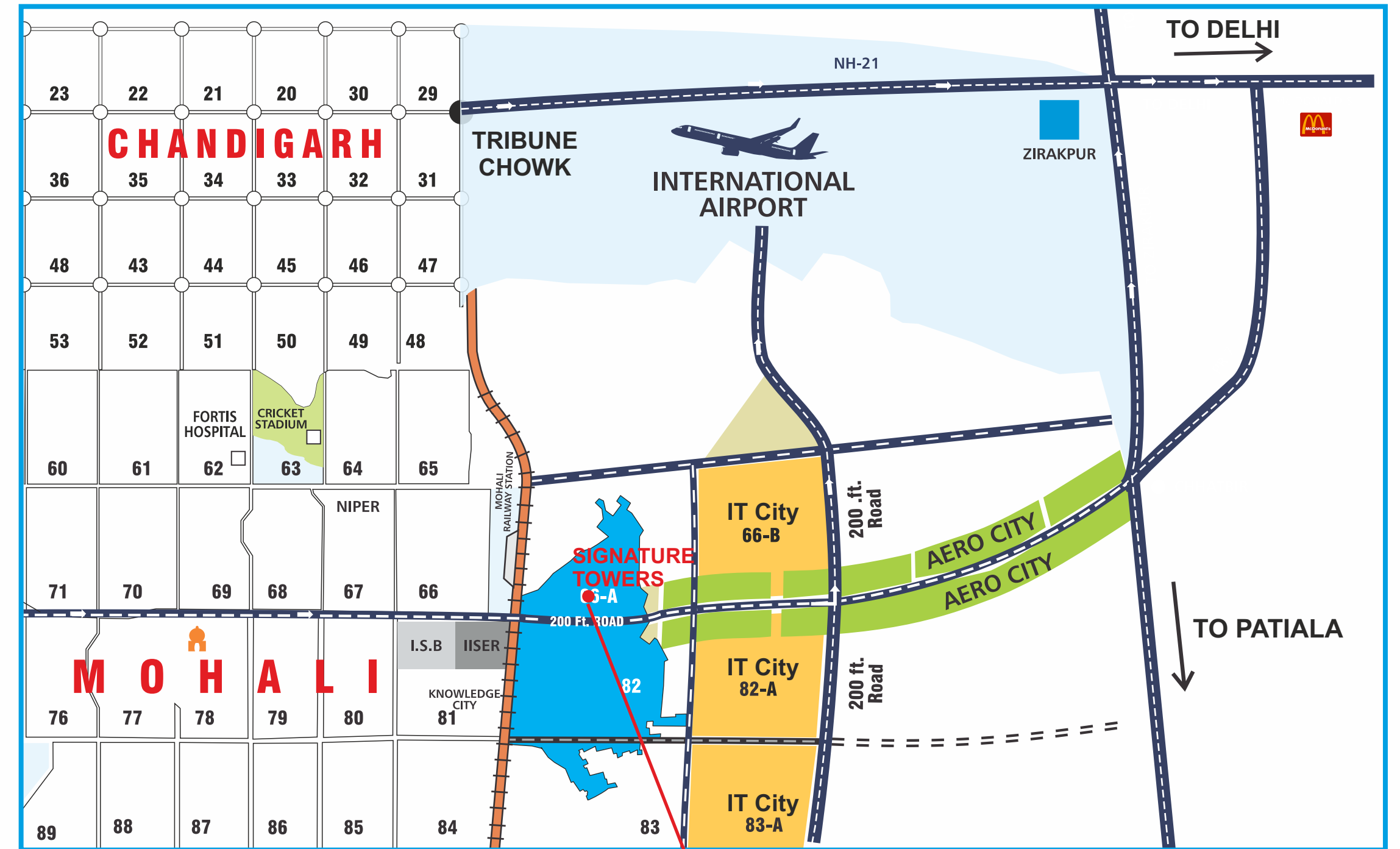




Location

Signature Towers is perfectly located in JLPL Eco-City, Sector 66A, Mohali and is just 7 kms from Chandigarh.

Located on 6 lane upcoming Chandigarh-Mohali International Airport Road that has emerged as the most important hub of future development in Mohali, Signature Towers has the perfect mix of location, ambience and facilities.



- 03 kms from the International Airport
- 07 kms from the ISBT, Chandigarh
- 05 kms from the ISBT, Mohali
- 300 metres from the Mohali Railway Station
- 05 kms from Fortis Hospital
- 05 kms from PCA Cricket Stadium
- 11 kms from Sector 17, Chandigarh
- 04 kms from Sector 70, Mohali
- 01 kms from International School of Business (ISB, Mohali)



*Map not to scale

THE MOST SIGNIFICANT DEVELOPMENT IN MOHALI HAS BEGUN.....!

Over the years, Mohali has become one of the most modern cities of Punjab. Unique to Mohali is the perfect blend of rich Punjabi culture and the urban environment. While the inception of Mohali was done with the idea of offloading the housing strain from Chandigarh, the city has now come up in a big way – and is envisioned as the 'city of tomorrow'. Taking shape in this "City of Tomorrow", are apartments with futuristic vision, an exclusive collection of luxurious homes...

THE SIGNATURE TOWERS



DHAM CONSULTANTS

The promoters of KLV also have a rich experience of Master Planning of 10000 acre approx in the state of Punjab & Mohali. Including Sector 82, 90-91, 100, 104, 110-111, 115 & Sectors 117-118 Including Gillco Valley, Shivalik Enclave and many others projects

KLV Builders & Developers would like to share with its esteemed patrons, its dream of providing luxurious yet affordable residential space in the shape of Signature Towers. It is a unique blend of the advantage of living close to the City Beautiful and at the same time retiring at the end of the day into the lap of a serene and peaceful surroundings. We have a stated objective, to use our collective experience and give a flawless product to our patrons. A home that will bring smiles to their faces, with that little personal touch so that each apartment though part of the township, would still retain their individual character. After having researched exhaustively into the needs and requirements of the people "Signature Towers" are built with the idea of making each corner of your home meaningful and special. Signature Towers boasts of really well defined, modern architecture and maximizes use of space.

Special attention has been paid to details like: • Two apartments on one floor • Two and three side open apartments • All apartments facing open greens • Modern yet simplified architecture • Optimum use of space • Adequate light and ventilation

Signature Towers is Surrounded :-

INSTITUTIONAL

- 5 Star Hotel and Convention Center
- 4 Star & Budget Hotels

RESIDENTIAL

- 4200 Luxury Apartments
- Villas

COMMERCIAL

- Shopping Mall • Multiplex Business Center • Office Spaces
- Shop-cum Offices (SCOs & Booths) • IT Buildings

Project Approved by Punjab Government

LETTER No.- 4934 (TP/PB)/SMP(M)-3 DATED-19/9/12 & LETTER No.- 1670 (DTP) DATED 19/9/12.

Green Area - 3.5 acres

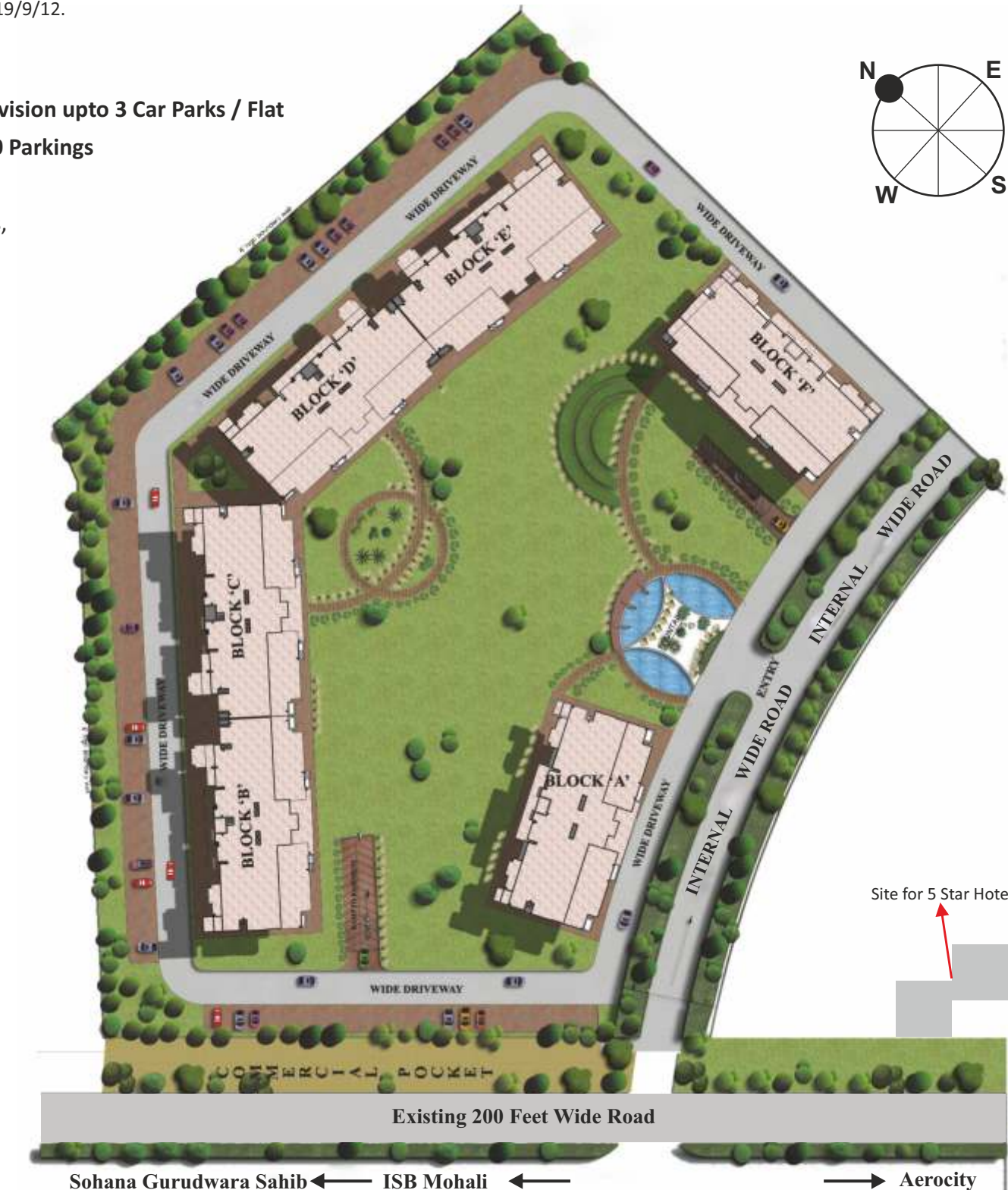
Car Parking Size - 600, Provision upto 3 Car Parks / Flat

Guest Car Parking Size - 50 Parkings

Gap Between Towers

A to B 120 fts, C to D 51 fts,

E to F 70 fts, A to F 125 fts



Site Layout

www.klvbuilders.com | www.dhamconsultants.com



A stunning landscaped masterpiece
The Signature Towers in JLPL City, Sector 66A, Mohali



Floor Plan - Non Corner Unit



Non Corner Unit
Super Area 3500 Sq. Ft. Approx.

2 to A Core 4 BHK with Servant Room

Disclaimer: All pictures, plans, layouts, information, data and details included in this brochure are indicative only and may change at any time up to the final "as built" status in accordance with final designs of the project and regulatory approvals and planning permissions.

Floor Plan - Corner Unit



Corner Unit
Super Area 3500 Sq. Ft. Approx.

2 to A Core 4 BHK with Servant Room

Disclaimer: All pictures, plans, layouts, information, data and details included in this brochure are indicative only and may change at any time up to the final "as built" status in accordance with final designs of the project and regulatory approvals and planning permissions.



Your own personal private world.

Luxury that pays attention to the finest details
and makes sure you live life to the fullest.

ACTUAL PHOTO OF SAMPLE FLAT



Features

- ♦ 24 hrs water supply & power backup
- ♦ Most of car parks in basement
- ♦ Servant room and servant toilet in each unit
- ♦ Separate entry for servant room
- ♦ Optimum utilization of natural daylight in each apartment with full height windows
- ♦ Dry & wet kitchen concept with dedicated store for kitchen.
- ♦ Modular kitchen
- ♦ Clean elevation with 'out of view' earmarked AC outdoor units and clothes drying line location
- ♦ Geyser location outside washrooms
- ♦ Wheel chair ramps cater to the needs of aged and differently abled.
- ♦ Rain water harvesting system to recharge aquifer and use of treated water for flushing & horticulture
- ♦ Gated complex secured with a multi-tiered security system
- ♦ Electronic keyless entry into the apartment with video door phone
- ♦ 24 x 7 professionally managed guards
- ♦ CCTV surveillance cameras
- ♦ Jogging track & landscaped lawns
- ♦ Broadband connectivity
- ♦ Indoor games facility
- ♦ Large playground
- ♦ High speed elevators
- ♦ Shopping convenience at doorstep
- ♦ Club house
- ♦ Swimming pool
- ♦ Super spacious apartments
- ♦ Building is designed with NBC mandated fire control norms



MASTER BEDROOM 1 - 13 X 19 FEET



MASTER BEDROOM 2 - 15 X 16.5 FEET



LOBBY - 17 X 18.5 FEET



GUEST ROOM - 15 X 12 FEET

Specifications

Living Room/Dining/Lobby & Family Lounge

Floor	Premium vitrified tiles conforming to Italian marble look
Doors	Pre-engineered designer door shutters in teak wood frame. Main Door 4' wide with electronic key-less entry.
Windows	High quality UPVC windows.
Electrical	Modular switches with copper wiring conforming to ABB HAVELLS legrand or equivalent standards.
Wall	Emulsion paint with putty/base.
Ceiling	False ceiling with decorative down lighters and with provision of cove lighting*.
A/Cs	Split air conditioners.



Bed Rooms

Floor	Laminated Wooden Flooring/Premium Vitrified Tiles
Doors	Pre-engineered designer door shutters in teak wood frame.
Windows	High quality UPVC windows.
Electrical	Modular switches with copper wiring conforming to ABB HAVELLS legrand or equivalent standards.
Wall	Emulsion paint with putty/POP base.
Ceiling	False ceiling with decorative down lighters and with provision of cove lighting*
Dressers	Fully fitted wardrobes/dressers with attractive laminate/veneer/glossy finish.
A/Cs	Split air conditioners in all bedrooms.



Disclaimer: All pictures, plans, layouts, information, data and details included in this brochure are indicative only and may change at any time up to the final "as built" status in accordance with final designs of the project and regulatory approvals and planning permissions.



Kitchen & Wet Utility

Fully furnished kitchen with modular fittings and counters in waterproof ply, shutters finished with decorative laminate/rubber wood/deco paint/high gloss.

Floor	Good quality antiskid tiles with skirting.
Doors	Pre-engineered factory made Skin/Masonite doors in hard wood frame.
Windows	High quality UPVC windows.
Counter	Granite counter top with stainless steel double bowl and tiles up to 2' height above counter
Fittings	Chrome plated fittings in all bathrooms' conforming to premium range of Jaquar GROHE CZAR THE BOLDLOOK OF KOHLER Roca standards or equivalent.

Toilets

Floor	Good quality ceramic antiskid tiles, confirming to high standards.
Wall	Good quality ceramic tiles confirming to high standards, up to 7'-0" height.
Chinaware	Quality chinaware confirming to Jaquar Hindware Jaquar CZAR THE BOLDLOOK OF KOHLER standard or equivalent. Bath tubs in 2 bathrooms.
Fittings	Chrome plated fittings in all bathrooms' conforming to Jaguar/Kholer/ Roca standards or equivalent.
Doors	Pre-engineered designer door shutters in teak wood frame.
Windows	High quality UPVC windows.
Electrical	Modular switches with copper wire.

Balconies

Heavy duty anti-skid tiles.
Steel railings with extra height (Child proofing optional).

External Walls

Weather proof paint & texture.

*Cove lights not included with false ceiling.

Disclaimer: All pictures, plans, layouts, information, data and details included in this brochure are indicative only and may change at any time up to the final "as built" status in accordance with final designs of the project and regulatory approvals and planning permissions.

Why Signature Towers ?

Signature Towers is promoted by KLV Builders & Developers, sister concern of "Dham Consultants", a leading 'Architecture and Town planning' consultancy of the region.

KLV is led by people who have over a decade of experience in the Punjab real estate space. KLV's principals are the architects/designer of many projects like Pearl's, TDI, JLPL, Gilco, and Shivalik.

Dham Consultants credits itself with the designing and planning of close to 10,000 acres in the state of Punjab alone. Our past developed projects include

Cozy Homes 1 & 2, Gulmohar Enclave (Banur & Kharar).

Our other present developments include

Signature Homes, Sector 100, Mohali (Possession Soon)

Signature Homes, Sector 99, Mohali (Upcoming)

Platinum Floors, Sector 118, Mohali (Completed)

Signature Business Park, Sector 94, Mohali (Upcoming)

Cozy Homes1, Zirakpur (Completed)

Previous Projects

Signature Homes are 'low rise', exclusive floors developed in Pearl's City, Sector 100. The construction is in full swing and around 150 floors are nearing completion.

Cozy Homes-1 is a gated campus comprising of 48 units in a secure & healthy environment. Sited at the rear of St. Soldier School, in Dhakoli, Zirakpur, it is a fully developed site with a number of families already enjoying the uninterrupted services like power & water supply. These pictures are the actual site photographs.



Signature Homes, Sector 100 - Possession Soon



(Proposed) Signature Homes - II, Pearl's City, Sector 99, Mohali



Cozy Homes 1, Zirakpur - Possession Delivered



Platinum Homes, TDI City, Sector 118, Mohali

