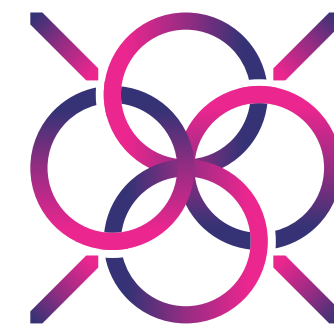




ROSELYN SQUARE

COMMERCIAL & RETAIL EPICENTER

- > SHOWROOMS & RETAIL SPACES
- > OFFICES
- > SOHOS
- > F&B OUTLETS
- > HOTEL



An emblem of sophisticated life, Roselyn Square defies conformity. From Retail to Office Spaces, Hotel to SOHOs, everything is striking and elegant in its own way, leaving a powerful impression in its wake. The breathtaking grandeur and neutral tones create an elegant corporate ambience and a centre to enjoy the modern lifestyle.

Rosy Singla
MD



Bold Personality. Broader Vision. Big Move.

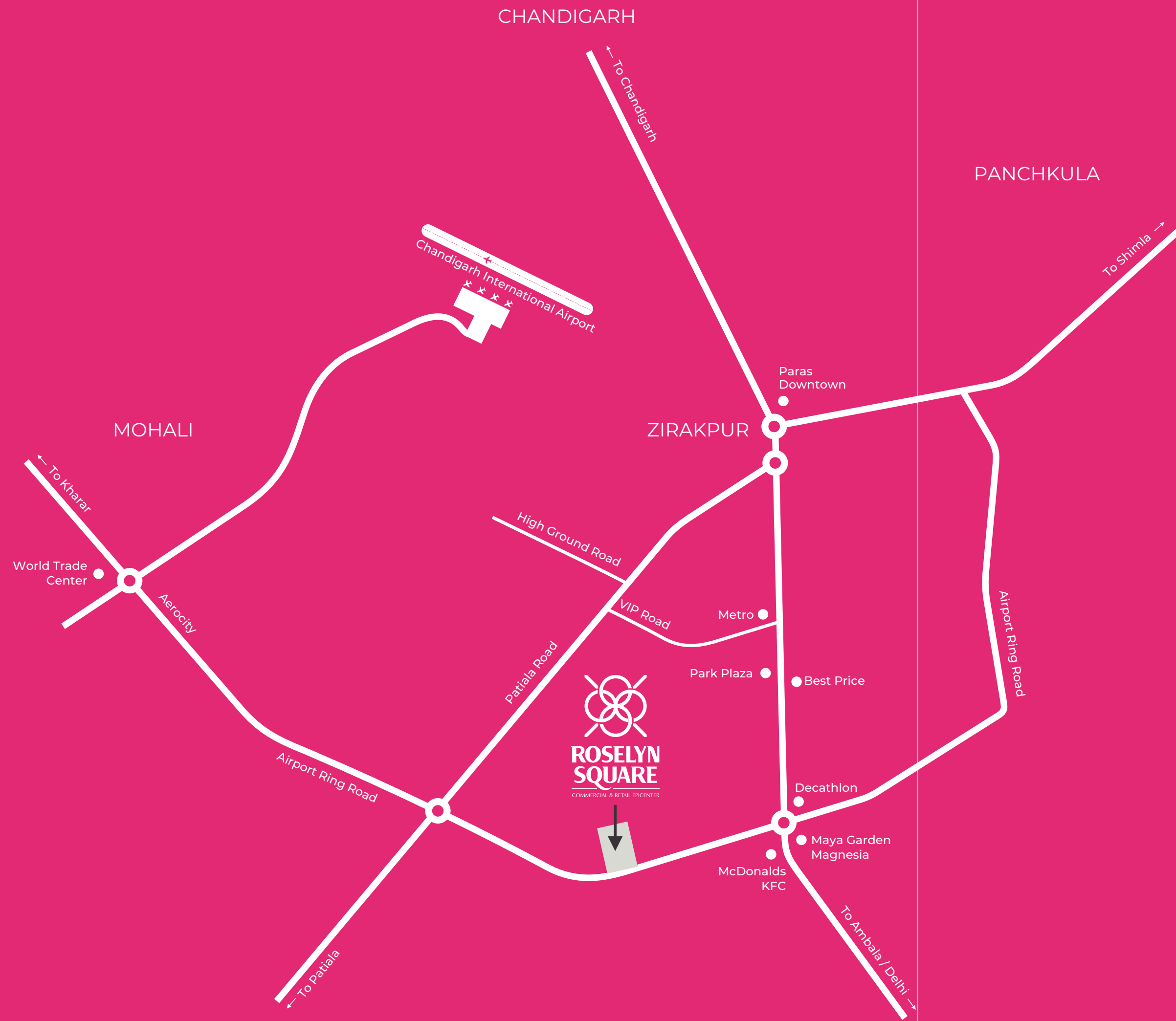
Over the years, I have been engaged in real estate's day to day working. Being away from the spotlight and working in the shadows, I learnt how to manage operations and handle investments. Being a woman is an added strength for me when working in the real estate sector. I value relationships and will continuously work to establish stronger associations with people through my work, passion and commitment.

Through Roselyn I wish to gift people the promise of a sophisticated edifice, laced with all the luxuries and amenities to make their experience potentially satisfying. It gives my team and I immense pleasure to burn the midnight oil in order to present our customers with formidable products and services. The love of one warm thought means more to me than any amount of money. Our only desire is to leave an everlasting imprint in this field. My ambition makes it possible for me to set insights on higher standards and being the sole female real estate entrepreneur, it has become imperative for me to deliver my commitments. A woman's word is a prized possession and I intend to fulfill mine. It has been a tantalizing journey so far and I wish to add to the jest, with my years of knowledge and practicality.

Roselyn offers a wide range of products, all that have been meticulously planned and created by the best minds in the city. Our humble project will be the birth place of new memories and the business of tomorrow.

Rosy Singla





Halfway to Everywhere.

After witnessing rapid growth, Zirakpur has become an established commercial hub. One thing that has led to such a vast development in least time is the happening airport road and Chandigarh-Ambala Highway. Well maintained 6 lane roads keep you connected to all the nearby areas and cuts down on travel time as well. 3.5 km long ring road assists in diverting Delhi-Mohali traffic, thus giving a more traffic free access to Zirakpur.

As Zirakpur has turned into a well established commercial area, with big names such as KFC, Burger King, D-Mart, Best Price, Cosmo Plaza and many more in the vicinity, makes the area more desirable for commercial ventures. Zirakpur is already a home to more than 5 Lakh middle class income group and the population is growing rapidly and so is the demand for commercial sectors. To meet high demands and keep constant supply of goods and services, many commercial projects are coming up in Zirakpur, giving residents something new to explore every time.

Entertainment zone, office spaces in close proximity and happening international airport is all making Zirakpur a prominent place to live, laugh & work.





Creating a Quintessential Fusion.

Aspirations have risen and also the standards of living. People are increasingly looking for new places to buy consumer goods and indulge in entertainment as well as leisure. Roselyn Square offers a unique blend of shopping, work and hospitality in a place that is designed with elegant solutions and practical experience. The well defined and chaos free infrastructure consists of proper drop off points, designated parking area, opulent retail spaces, offices, SOHOs and hotel area.

◀ Visage of modern architecture.



The posh, warm and welcoming atmosphere of Roselyn Square will leave the visitors spellbound. The practicality of the project will become a dream destination for the entrepreneurs. Roselyn Square will be a hot destination for the urbanities to shop at leisure, relish delectable cuisines; work in a flexible & contemporary environment.



Path taking to all your desires.
▼

Artistically splendid concourse.





Bespoke Sky Bridge & Glass Walkways

The sky walks at Roselyn Square have glass base - a feature that the citizens of the region have never seen before. It connects the vast area in a seamless way, giving a faster access to your desired points. The high raised attraction is intricately planned and designed to give a distinctive look that visitors will find hard to forget. The Raindrop overhead the sky walk adds a charismatic charm, offering a perfect spot to click some incredible pictures and enjoy the convenience at the same time.



< Feel like you are floating in the air. ^



Adding upto Big Results.

We are living in a time where every working individual is on a look out for a wise potential investment option to grow their hard earned money. As real estate sector is booming, it has become the most preferred and secured investment option. To add cherry on the cake, commercial properties are even more profitable in the real estate industry, the reason being higher returns, more real estate value, value appreciation, quicker liquidation and pride ownership. But for investment purposes there are only a limited number of options available. Roselyn Square is a smart choice for investors and corporate who wants to make most of their investment. Your today's investment will turn into a flourishing business tomorrow. Thus, joining hands with us will be a proud honour for us as well as for your business.

At Roselyn Square one can invest in Retail, Office Spaces, Hotels, SOHOs and F&B Outlets etc. The stunning infrastructure and delightful location will make the project a huge success.

^
Eloquently stylish threshold.





Because its shop o'clock somewhere.



As more and more population is settling in the urban areas, the demand for commercial sector is simultaneously increasing. People have already seen a rise in shopping malls in the vicinity but Roselyn Square is going to bring in a shopping revolution. The commercial project will be catering to peculiar and distinctive preferences of the shoppers and will offer choices, conveniences and unrivalled experiences all at the same time. In a place like this, marketing your brand in retail activity will only give you added advantage. Every big, small or premium brand can be a part of us.

Our mixed retail services are well patterned and will give an organised retailing sector to Zirakpur that has been amiss all this time. The atrium is thoughtfully planned and designed to maximise the potential success of any business. Everything here has been crafted for those who want to go a step ahead of the ordinary. Facilities and amenities offered by Roselyn Square will increase the footfall and ensure that time spent here is as memorable as one can ever think of.



Where Teamwork makes the Dream Work.

Business hub in a sterling location is enough to attract businesses, investors and entrepreneurs, who want to take their business to a whole new level.

The office floors at Roselyn Square are designed to offer unique office spaces to established as well as budding entrepreneurs. Spacious, well organised space will not only take care of your privacy but will ensure maximum space utilization for smooth functioning of the business. With Wi-Fi facility and power back up, you can easily carry on with your day to day operations without any hurdles. To build a corporate empire, all the necessary measures were taken into account so that your each and every expectation from an office space is fulfilled.

The master plan is capable of accommodating a number of corporate businesses with ease. Every business will get a modern working environment at Roselyn Square along with comfort, sophistication and charm of a progressive business address.



Grow in your comfort zone.



Strike a Perfect Balance between Professional & Personal Life.



A dream wrapped in comfort.

Designed keeping the work ethics and ergonomic culture in mind, Roselyn Square has created signature SOHO suites that represent an ideal business environment with the focus on nurturing the growth and well being of its patrons. Here, no boundaries exist to confine you to a fixed space. You can put it to whatever purpose you have in mind and live a modern lifestyle that offers plenty of conveniences.

Space designs of SOHO Suites are optimized to enhance the flow of energy. You can freely express your creativity and use the space according to your particular needs. Whether you are an entrepreneur, retailer or service provider, Roselyn Square is equipped with all modern facilities to offer utmost comfort to the urbanities.



A place to love your work.




A Bouquet of Assorted Flavours and Cuisines.

Everyone is unique and have a different taste palette. We at Roselyn Square have thoughtfully designed our Food court so that assorted palettes can unite under one roof. We have a variety of outlets here for speciality restaurants, bar, banquets, cuisine restaurant, coffee shops and pubs. A lavish and fine dining experience is surely going to satisfy the taste buds of in house or outside guests.

The F&B area is created with the thought to provide utmost comfort to shoppers and working professionals. A number of outlets will home multiple cuisines to provide something new to your taste buds every day. Clean area and strategic seating arrangements will be able to seat large number of people ensuring utmost convenience.



Rich culinary experience awaits. 



Filling your world with the Warmth of Hospitality.

Apart from spacious retail shops & showrooms, practical office spaces and multi-cuisine F&B outlets, one might need a little extra. That extra is a luxurious space where one can enjoy comfortable accommodation. With this thought in mind, Roselyn Square has erected a hotel so that work and pleasure can go hand in hand.

It will also be a great benefit for the businessmen as they can easily accommodate their clients at the hotel in Roselyn Square, thus cutting down on travel time and making working hours more practical.



^
A place of relaxation & tranquility.



< A Plethora Of Exotic Cuisines



On the Rooftop, Under the Sky.

At Roselyn Square everything is above ordinary and anyone can very well experience the same with our range of rooftop amenities. From rooftop swimming pool and lounge to alfresco dining, we have it all. Savour lip smacking cuisines, light meals, thirst quenching drinks and a lot more in an oasis like atmosphere that has been created for your pleasure and leisure only. The scenic view from the rooftop will add to your celebrations. Whether you are here for business meeting or a social gathering, the rooftop area will serve the purpose with utmost elegance.



< Coupling Luxury And Convenience.



Dynamic & World Class Features

Ingenious Features

Glass Capsule Lifts with panoramic views.

Pneumatic / Hydraulic Parking Base for convenience.

Sky Bridge & Glass Sky Walkways - first time in the region.

Weather Proof Escalators adding modern tinge

Open Sky Dining spaces with drool-worthy delicacies

Rooftop Swimming Pool to eliminate day's stress.

Exclusive Features

- Well designed layout for maximum functionality.
- Unique architecture.
- Earthquake resistant building.
- Purified water supply.
- High footfall due to its centric location.
- All mega brands under one roof.
- High speed lifts in all blocks.
- Fully furnished offices & SOHOs.
- Ample natural air and light in almost all areas.
- Multiple common washrooms on every floor.
- Complete Wi-Fi enabled zone.
- Round the clock CCTV monitoring.
- State of the art fire detection and control system.
- Low maintenance cost.





Lower Ground Floor



Upper Ground Floor





First Floor



Second Floor





Third Floor



Fourth Floor

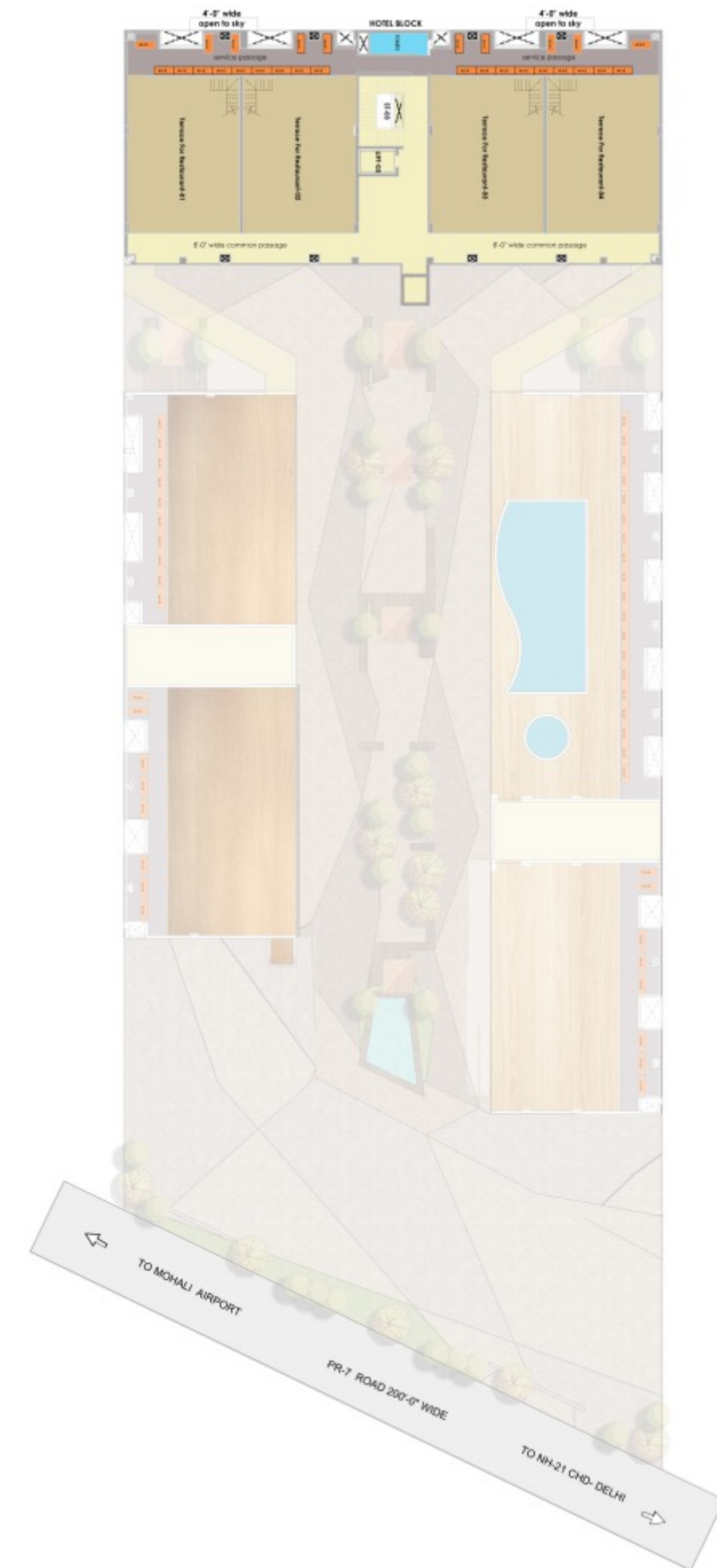




Fifth Floor



Terrace Floor





The bricks of our Strong Foundation.

The Symbol

The logo of Roselyn Square has been put together with a lot of thoughts. The crossing lines symbolize the four directions that show our futuristic approach of reaching all the directions of prosperity & significant value. As it is a commercial property, the four lines also signify a multiplier. We aim to multiply the wealth, investment & business that come here. The four circles signify coins. Today, we may use digital or paper money but coins were the original form of currency. Over the years, the look and feel of the coin may have changed but it has not lost its real value neither it will in times to come.

The Colours

The colour of universal love for oneself and others, Rose represents friendship, affection, harmony, inner peace, and approachability. Fierce energy of red and the calm stability of blue, the colour purple is often associated with royalty, nobility, luxury, power and ambition. It also represents the meaning of wealth, extravagance, creativity, wisdom, dignity and grandeur. All the traits of these beautiful colours have been adopted by Roselyn Square and expect to deliver the same to all.

The Typeface

Roselyn Square is not only making a distinct mark with the logo but also with the typeface. The name "Roselyn Square" is custom designed, digitally drawn and bold font, giving an absolute contemporary appeal to the brand name. The sharp and curvy edges gel perfectly with the logo's graphical elements.



A Project By **Rosy Singla**

PR-7, 200 Ft Airport Road, Zirakpur.

Tel: 9115907097, 9114507099

Email: info@robuslandcorp.com

www.roselynsquare.com

Disclaimer- The specifications and images are used in this project brochure are conceptual. This brochure provides general information and can not form the basis of any legal commitment. The company reserves the right to make amendments as and when required. The construction of the project will be carried out as per the plans approved by the competent authorities.