



Green Residences at Zirakpur-Patiala Highway

We build houses where nature
knocks on your door in all its riches and glory.

Green Lotus works with the singular focus
of creating eco-friendly homes—residential units
that have minimum carbon footprint,
and are high on energy conservation.

Live a life in tune with the 'green needs'
of modern world.



3, 3+1, 4 and 5 BHK
Green Apartments & Penthouses



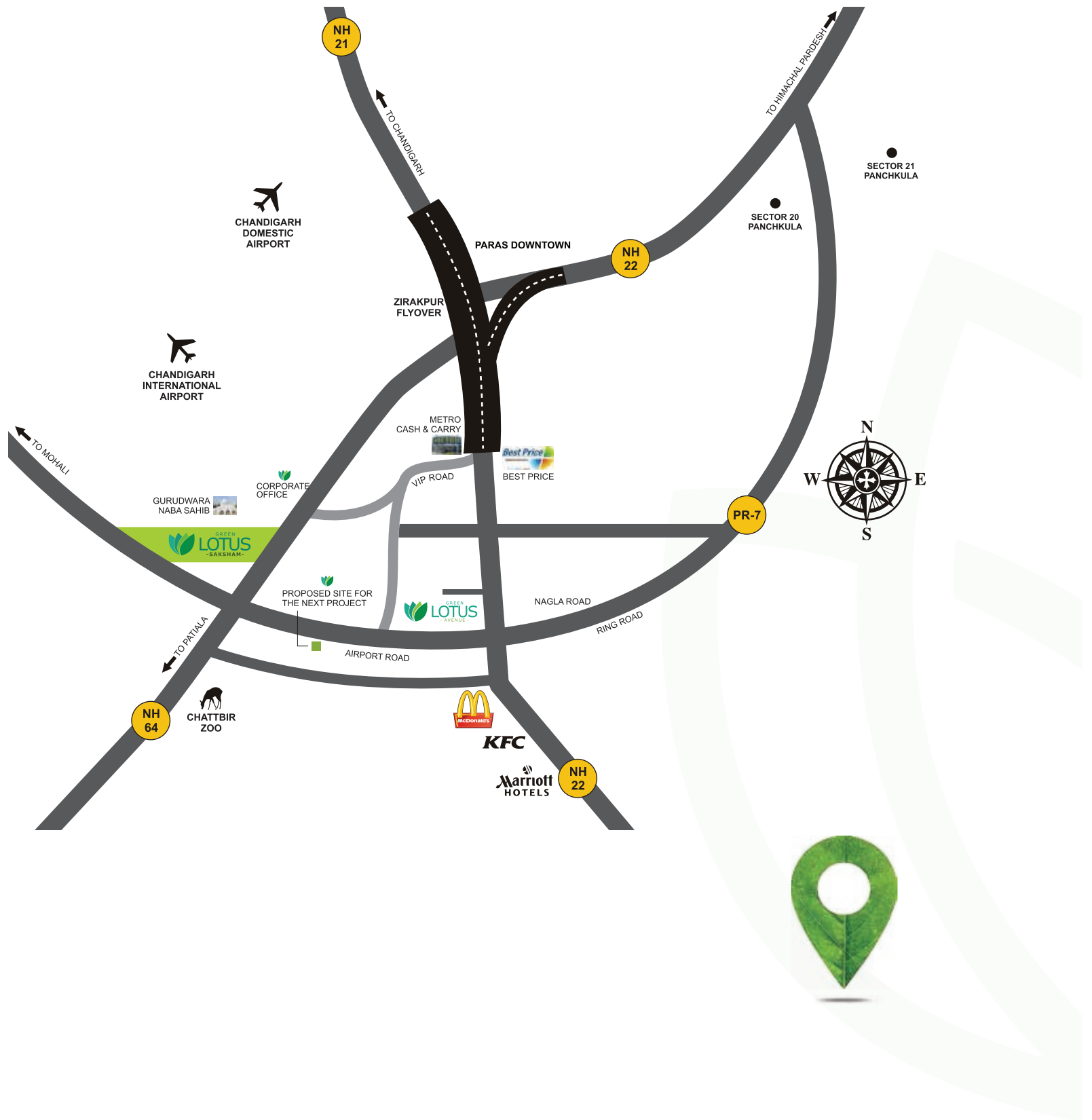
We started a long time back to be the very best.

We understood 'best' as using top quality construction material, delivering on time and giving the best customer service. But with time we realized that 'best' also involved being 'responsible'—responsible to environment, people and generations to come. We came out with the concept of green life—a life that comes with eco-sustainability.

So, we started making resource-efficient housing. We promise to continue to give you more green options.



#LOCATIONMAP

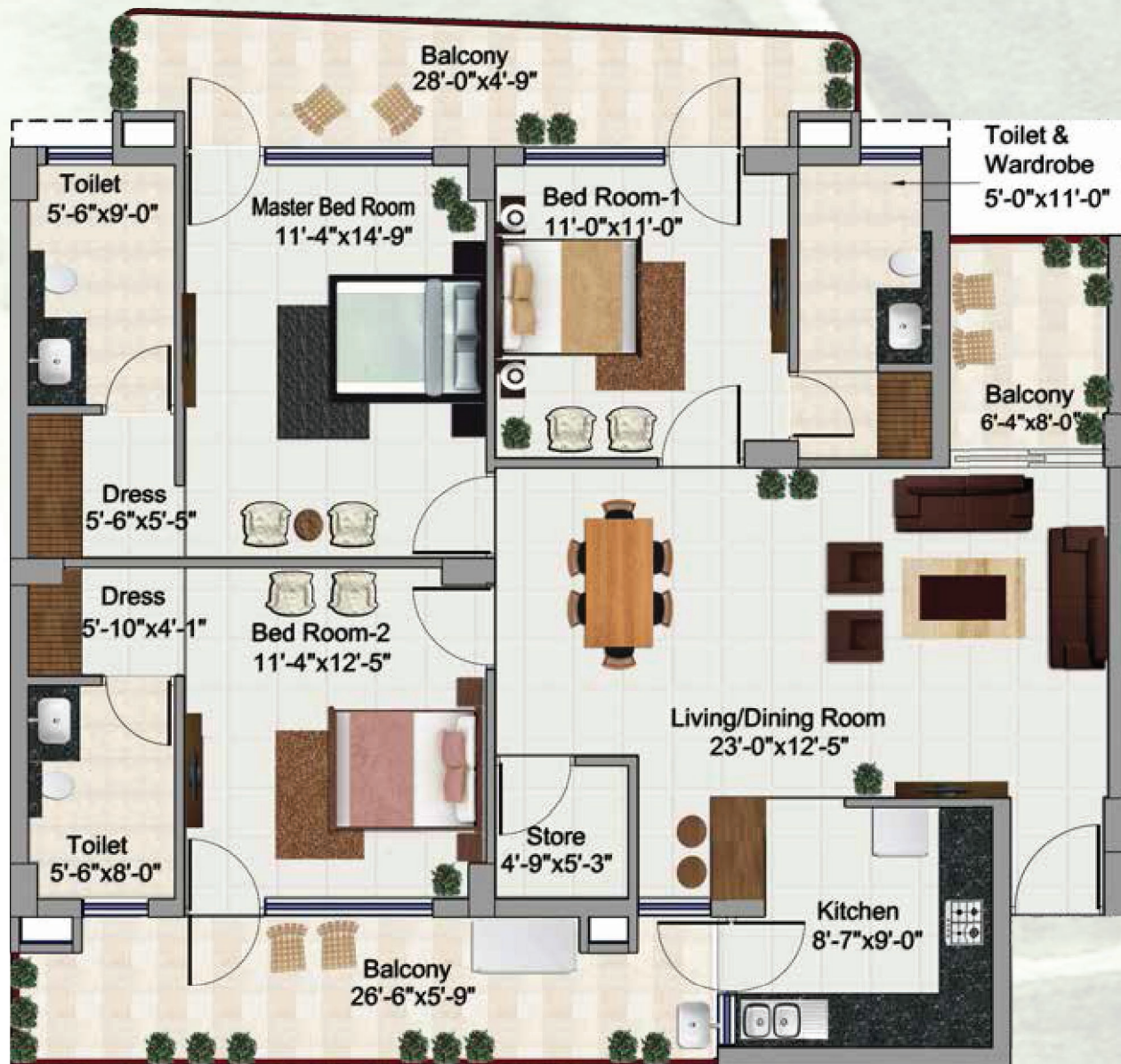


#SITEPLAN



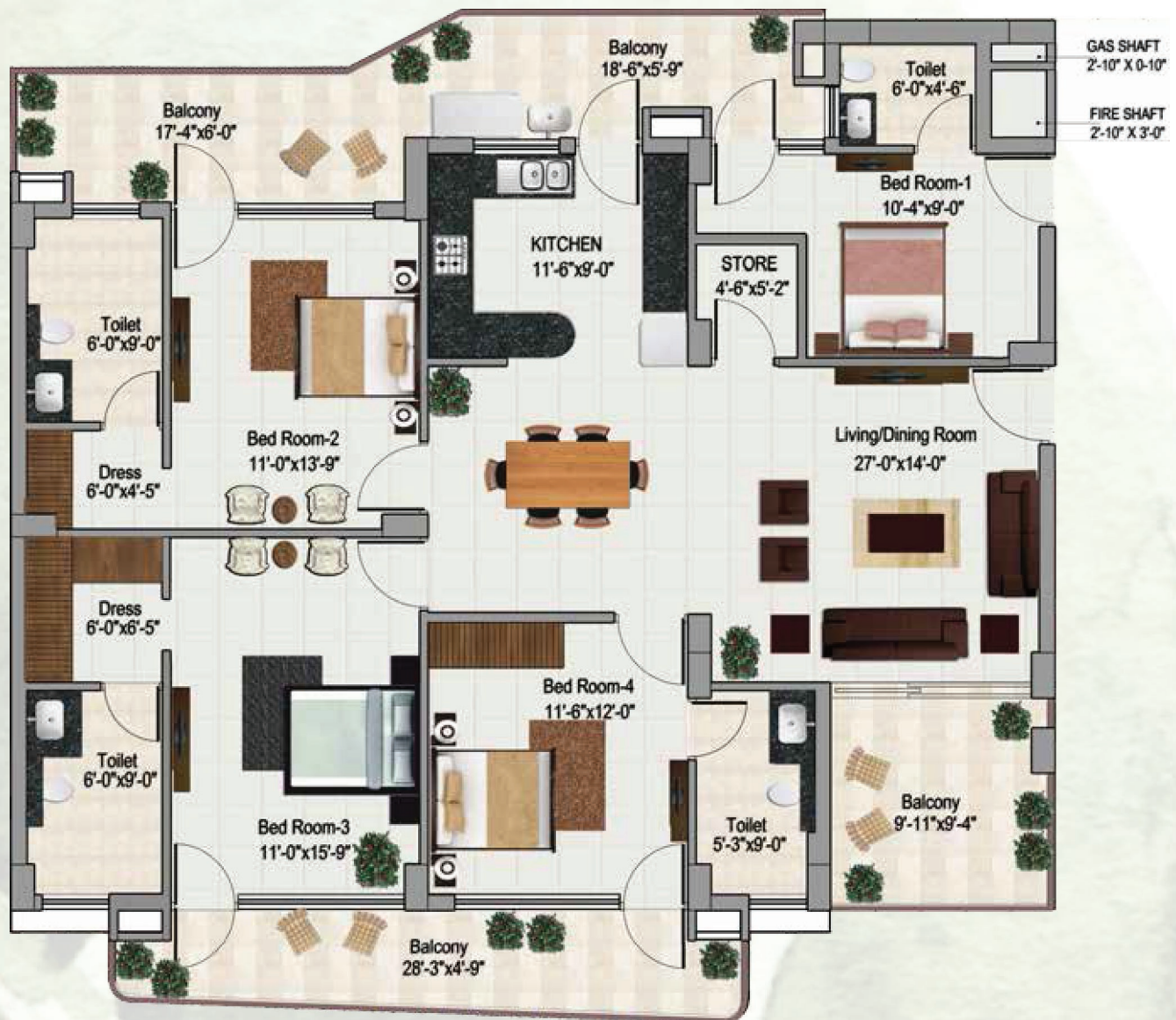


#FLOORPLANS



3 BHK APARTMENT

Carpet Area - 1091 Sq.ft. | Unit Area - 1503 Sq.ft. | Super Area - 1906 Sq.ft.



3 BHK+S APARTMENT

Carpet Area - 1346 Sq.ft. | Unit Area - 1862 Sq.ft. | Super Area - 2335 Sq.ft.



5 BHK APARTMENT

Carpet Area - 2006 Sq.ft. | Unit Area - 2672 Sq.ft. | Super Area - 3361 Sq.ft.



3 BHK PENTHOUSE

APARTMENT AREA

Carpet Area - 1091 Sq.ft. | Unit Area - 1503 Sq.ft. | Super Area - 1906 Sq.ft.

TERRACE

Super Area - 1906 Sq.ft.



3 BHK+S PENTHOUSE

APARTMENT AREA

Carpet Area - 1346 Sq.ft. | Unit Area - 1862 Sq.ft. | Super Area - 2335 Sq.ft.

TERRACE

Super Area - 2335 Sq.ft.



4 BHK PENTHOUSE

APARTMENT AREA

Carpet Area - 1688 Sq.ft. | Unit Area - 2216 Sq.ft. | Super Area - 2809 Sq.ft.

TERRACE

Super Area - 2809 Sq.ft.



5 BHK PENTHOUSE

APARTMENT AREA

Carpet Area - 2006 Sq.ft. | Unit Area - 2672 Sq.ft. | Super Area - 3361 Sq.ft.

TERRACE

Super Area - 3361 Sq.ft.



GREEN LOTUS SAKSHAM COMES WITH A PROMISE.
A PROMISE OF A BETTER AND RESPONSIBLE LIVING.
IT HELPS YOU ENJOY MODERNITY AND BLESSINGS OF NATURE
MORE AND ALSO HELPS CONTRIBUTE IN MAKING
THE PLANET GREENER AND LIVABLE FOR THE PRESENT
AND THE FUTURE GENERATIONS.





THE **GREEN** CLUB

Created with a thought that you could do
so much without leaving home.

 CAFE LOUNGE

 SPORTS AND HEALTHY LIFESTYLE

 LEISURE

 KIDS AREA

 ENTERTAINMENT

 OTHER FEATURES



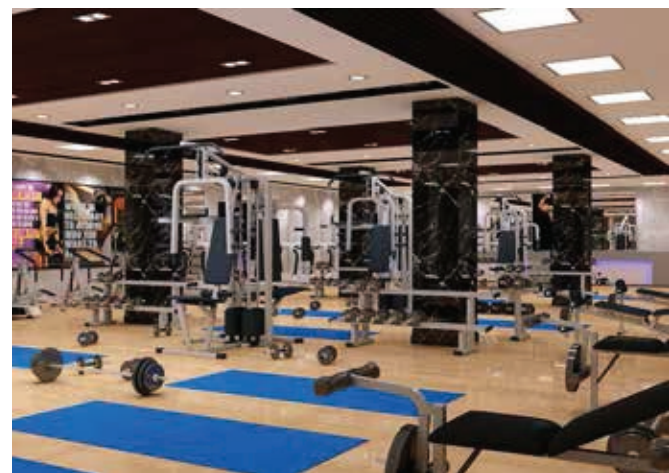


With interiors designed around your recreational and fine dining needs, The Green Club offers impeccable service, warmth and grace. The experience here is sheer mesmerizing.





The spectrum of offerings for sporting and health training needs is indeed wide and engaging. The enjoyment and gaming pleasure seamlessly come together to optimise the use of your free time.



TECH. SPECIFICATIONS

BEDROOMS & LIVING ROOM	External Window/Glazing Doors Flooring Other Walls	UPVC/CFFS PVC Laminated flush doors Vitrified tiles Wooden cupboards in all bedrooms Acrylic emulsion
MODULAR - KITCHEN	Walls Flooring Kitchen Slab External Window & Glazing Walls	Glazed tiles up to 2 ft. from slab level Vitrified tiles Granite UPVC/CFFS PVC Acrylic emulsion
BATHROOMS	Walls Flooring Doors External Window & Glazing Fitting	Glazed tiles up to door height and Acrylic emulsion Anti skid tiles Laminated flush doors with polish/paint UPVC/CFFS PVC Branded Chinaware & CP fittings
STAIRCASE / COMMON CORRIDORS	Walls Flooring Others	Acrylic emulsion Granite MS railing
BALCONIES	Flooring Others	Vitrified tiles MS railing/Glass railing*
POWER BACKUP	Paid Power Backup	5 KVA to 15 KVA (As per category of apartment)
ELECTRICAL WORK	Electric Work	Modular switches, cable, TV and telephone points
PLUMBING WORK	Plumbing Work	SWR, PPR, CPVC & UPVC pipes of reputed make
FINISHING	Internal Finish External Finish	Acrylic emulsion/putty on walls & all room ceilings Exterior emulsion weather proof paint

*Some flats might have Glass Railings on the sole discretion of the builder.

SMS LOTUS TO 56767
www.greenlotussaksham.com
Saurabh Sood | Mob: 89687-58415

Corporate Office:

SCO 14,15,16 & 17, Near Nabha Sahib Gurudwara,
Zirakpur-Patiala Highway, Zirakpur, Distt. Mohali. Pin 140 603 (Punjab)

Saurabh Sood | Mob: 89687-58415

RERA Registration No. : **PBRERA-SAS80-PR0122**



Map not to scale, this brochure is purely conceptual and not a legal offering. Further, in the interest of maintaining high standards, the company/Architect reserve the right to modify any detail/specification/feature shown and presented here.